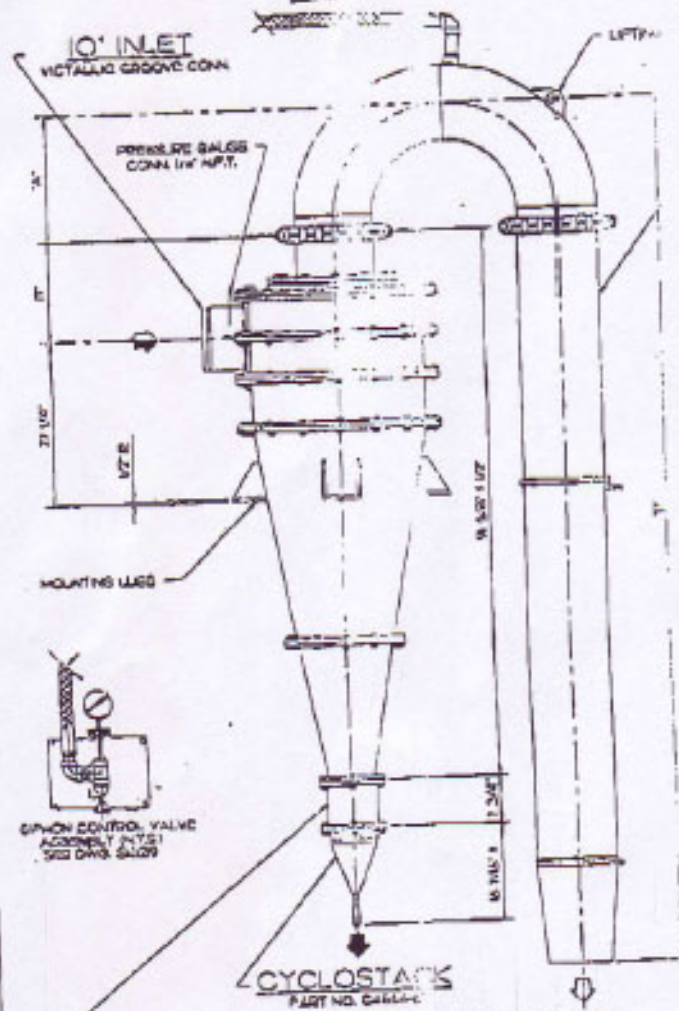
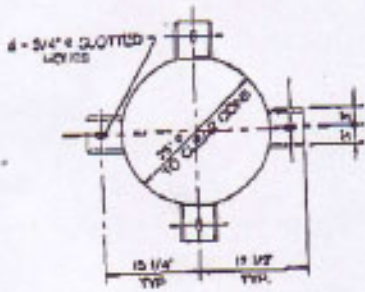
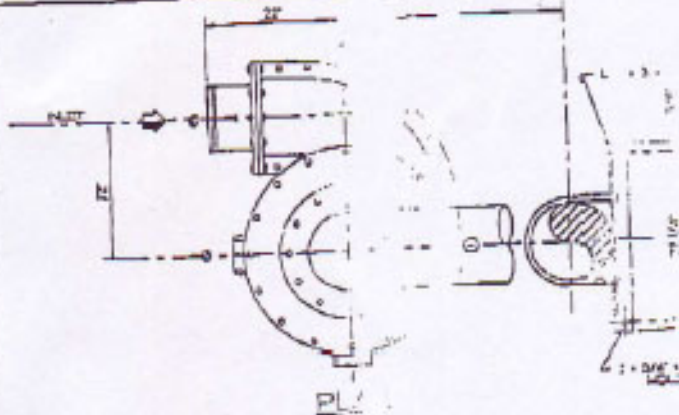


KREBS CYCLONE

MODEL D268-1701

USE WITH PARTS LIST PL330-600



OVERFLOW PIPE ASSEMBLY

ASSEMBLY NO. 679101-602H101

- 10" A - 10" B - 14 5/8"
- 12" A - 2" B - 14 5/8"

PRESSURE GAGE & FITTING

- PUBLISHED
- NOT PUBLISHED

- INLET HEAD LINER PART NO. 21222-21211 10"
- VORTEX FINDER PART NO. 21222-21211 10"
- APEX ORIFICE PART NO. 17222-21211 2"
- WEIGHT 1337# FINISHING WEIGHT 2168#

NOT TO SCALE

KREBS ENGINEERS 1205 CORTADO DR. MENLO PARK, CA 94025

DATE: 5/1/81 BY: JLV

GENERAL ARRANGEMENT
KREBS CYCLONE MODEL D268-1701
W/ CYCLOSTACK AND SIPHON CONTROL ASSY

DATE: 5/1/81 BY: JLV

TOLERANCE UNLESS OTHERWISE NOTED

THIS DRAWING IS THE PROPERTY OF KREBS ENGINEERS. IT IS LOANED TO YOU AND IS NOT TO BE REPRODUCED OR USED IN ANY MANNER WITHOUT THE WRITTEN PERMISSION OF KREBS ENGINEERS.