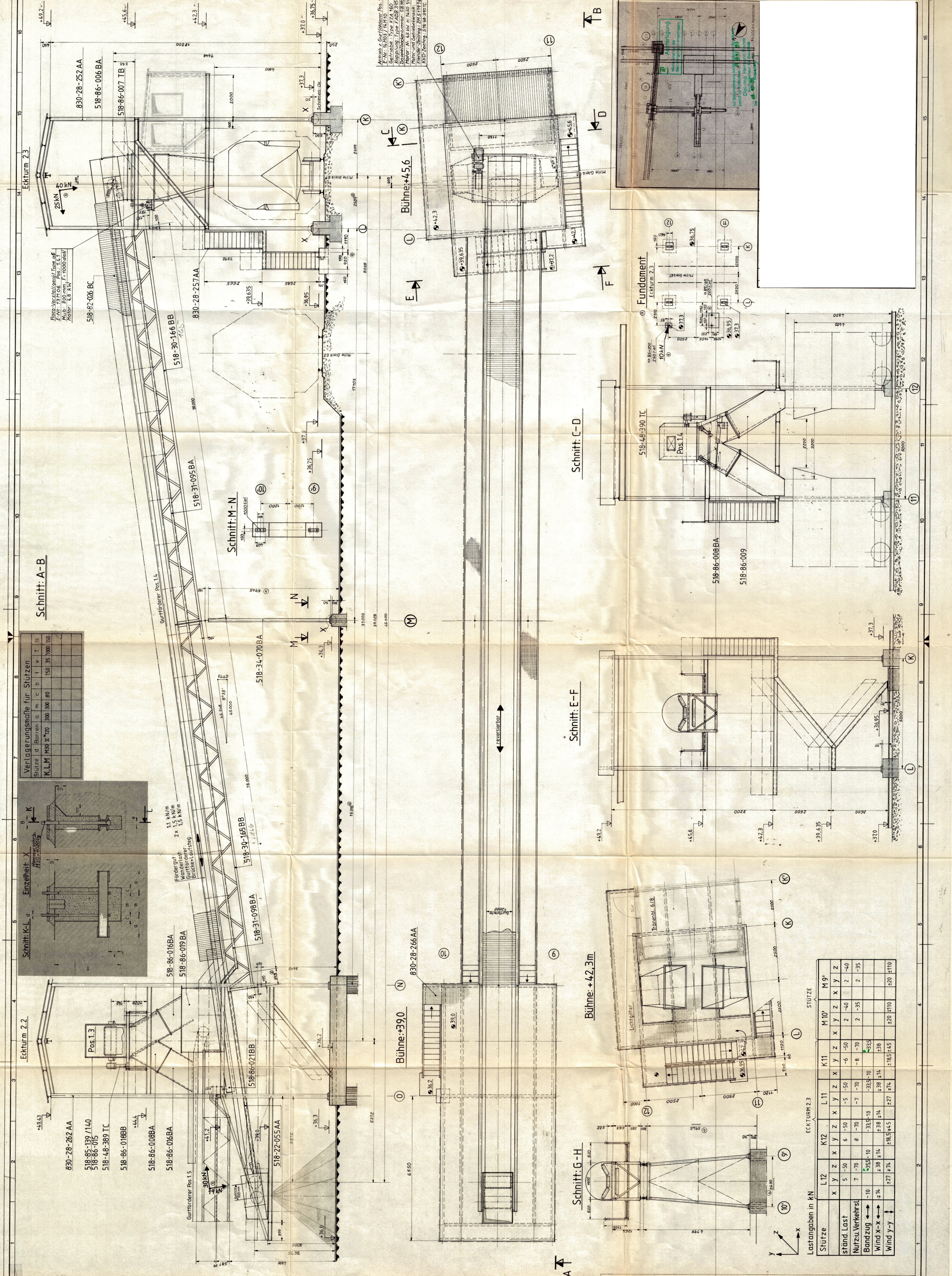
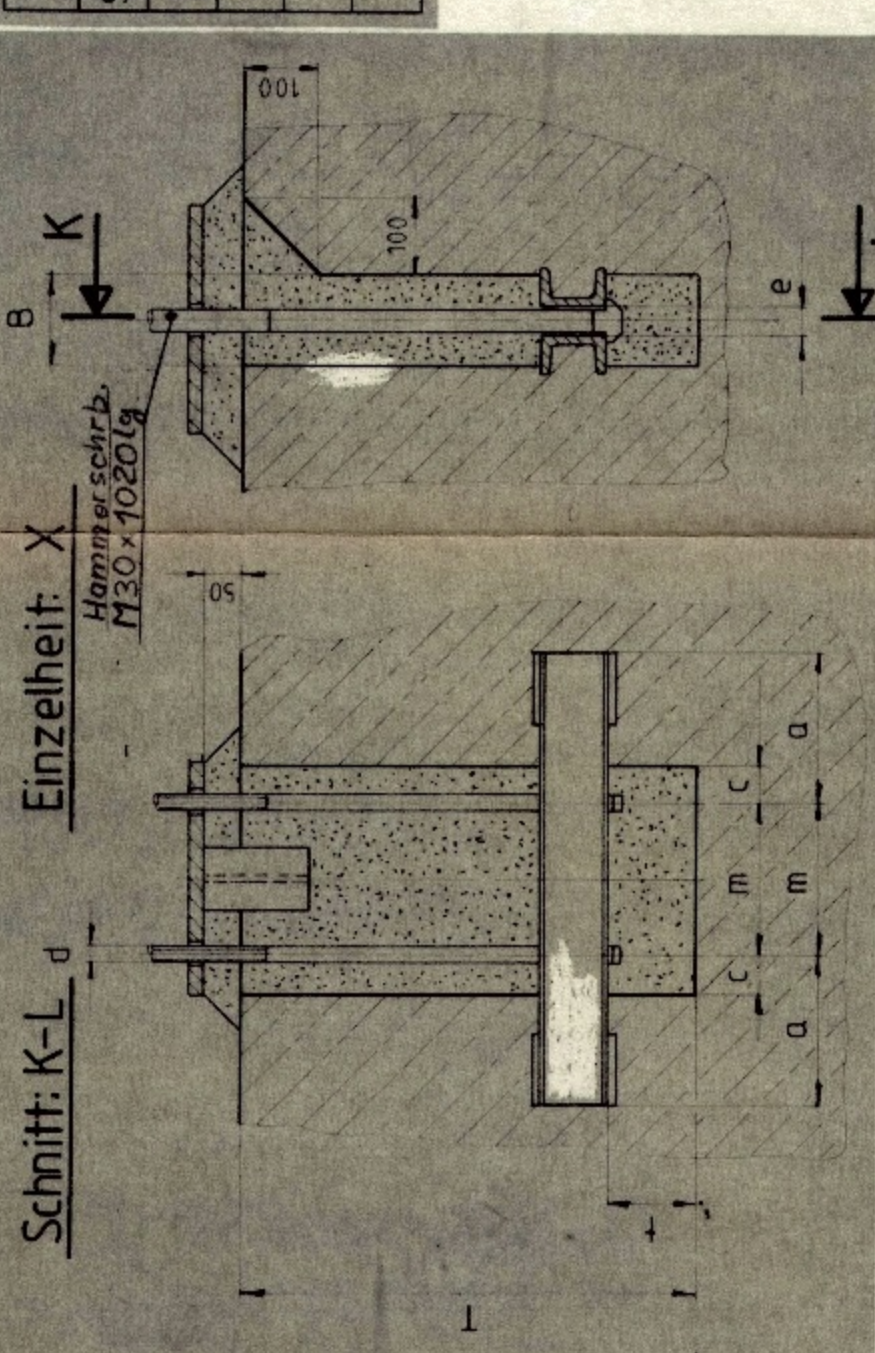


Schnitt: A-B

Verlängerungsmaße für Stützen

Stütze	d	Barren	a	m	c	b	1	e	T	B
K, L, M	M39	II	70	300	300	80	150	35	1000	150



Motor- & Getriebe: Pos. 14
 E-Nr.: M. M03 / M. H10
 Getriebe: Type KZA 160
 Motor: Type KZA 160
 Motorleistung: 93 kW
 Motor: M. AS AW n: 1450 1/min
 Motor- und Getriebeleistung:
 Motorleistung: 93 kW
 Getriebeleistung: 93 kW
 KID-Code: 818 14 210 16

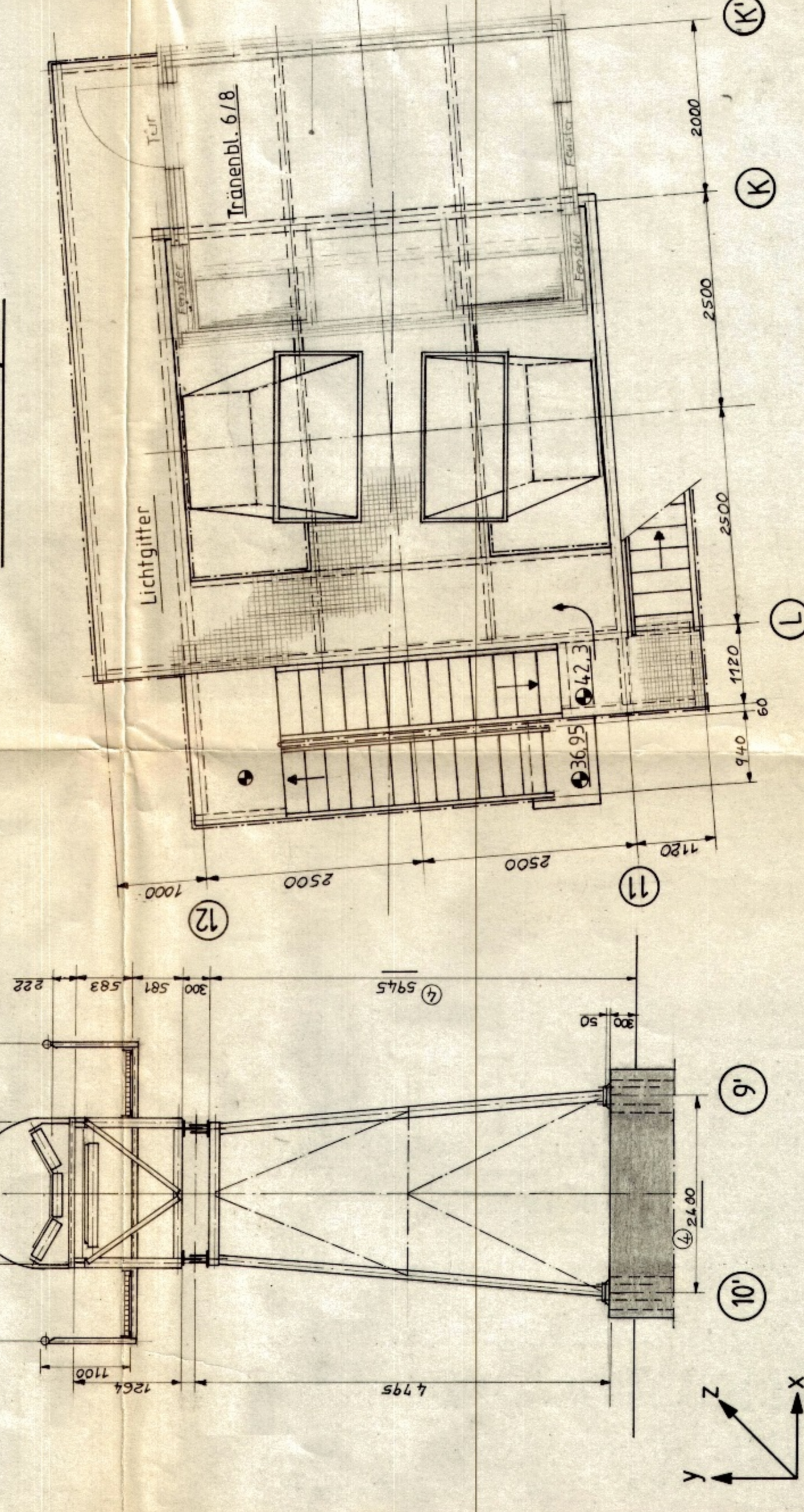
Pos. 25: Verankerung Type of
 Hüb: 800 mm, F: 1000 daN
 Motor: 4.8 kW

Fliehkraft:
 11 kN/m
 2 x 1,5 kN/m
 Manderlast:
 Gurtförderer:
 Brücken-Laufsteig:

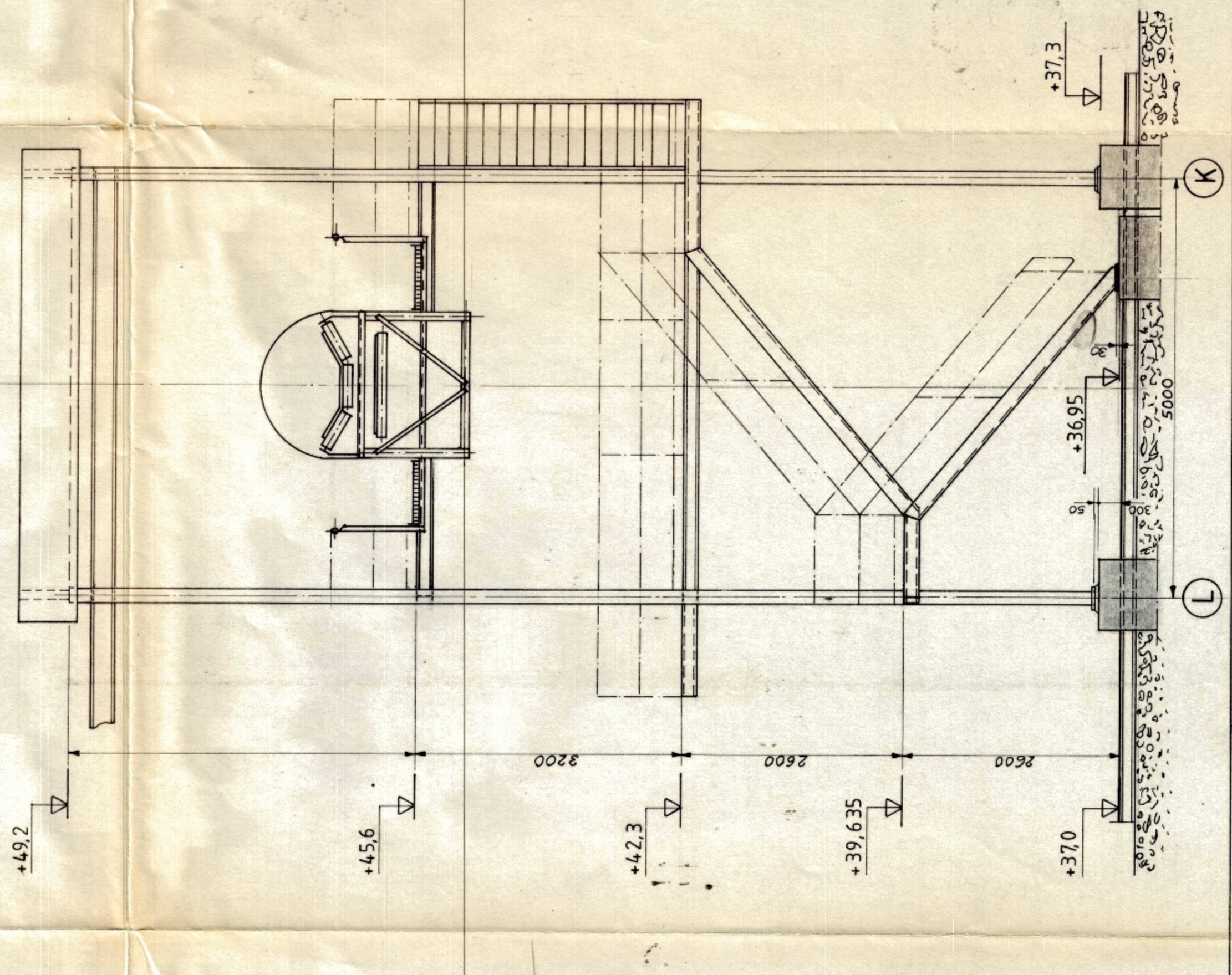
STÜTZE

Stütze	L12		K12		L11		K11		M10'		M9'	
	X	Y	Z	X	Y	Z	X	Y	Z	X	Y	Z
stünd. Last	5	-50	-5	-50	-6	-70	-8	-70	-8	-70	-8	-70
Nutzu. Verkehrsl	7	-70	8	-70	-7	-70	-8	-70	2	-35	2	-35
Bandzug	-10	-35	-10	-35	-10	-35	-10	-35	-10	-35	-10	-35
Wind X-X	±14	±38	±14	±38	±14	±38	±14	±38	±14	±38	±14	±38
Wind Y-y	±27	±74	±27	±74	±27	±74	±27	±74	±20	±110	±20	±110

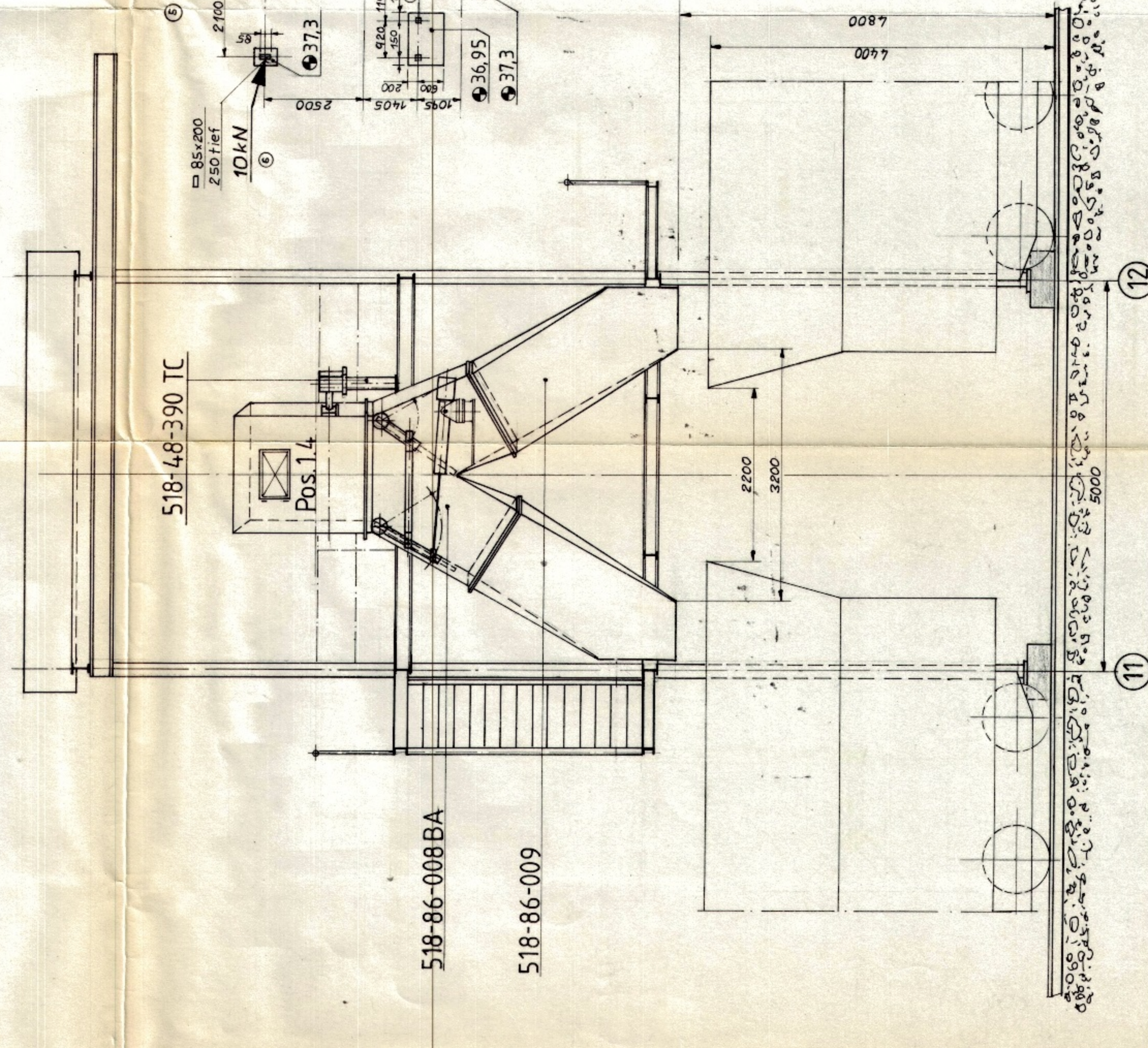
Schnitt: G-H



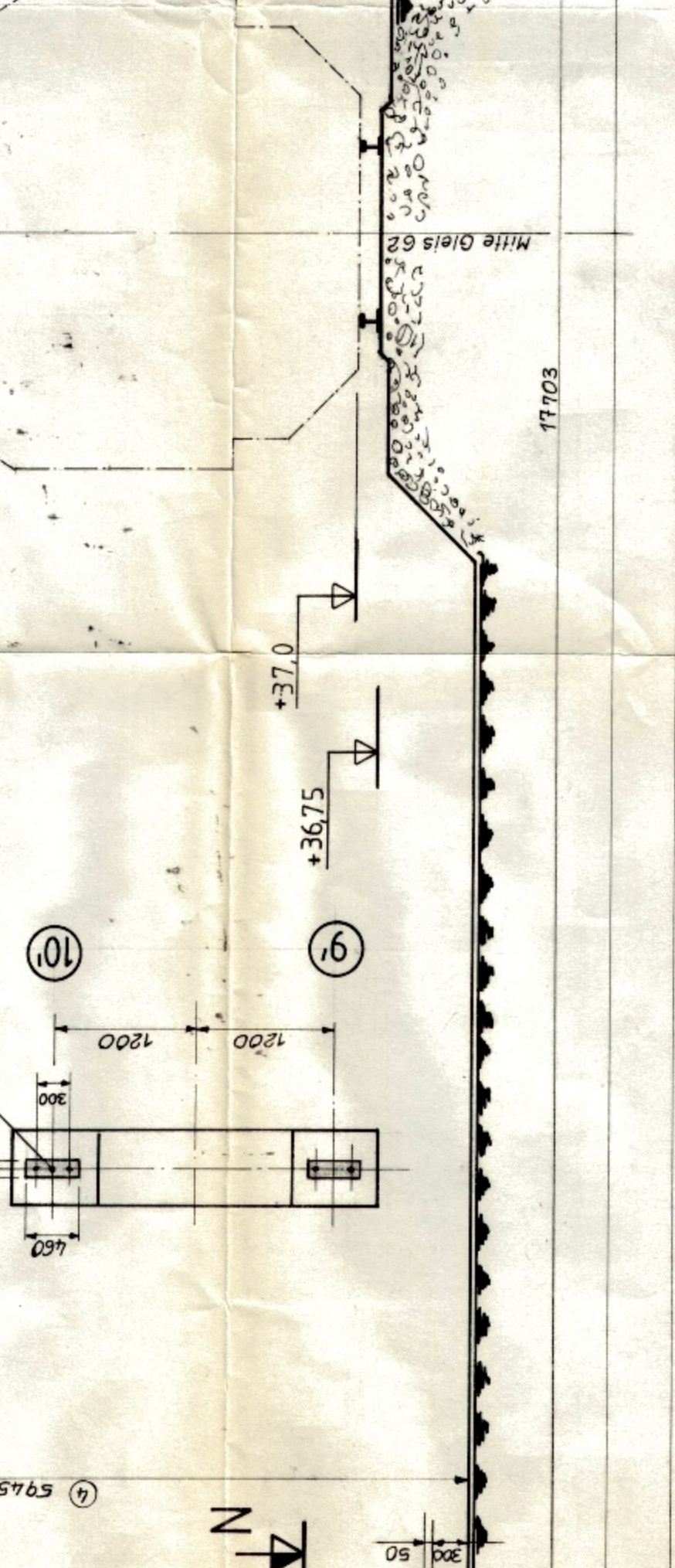
Schnitt: E-F



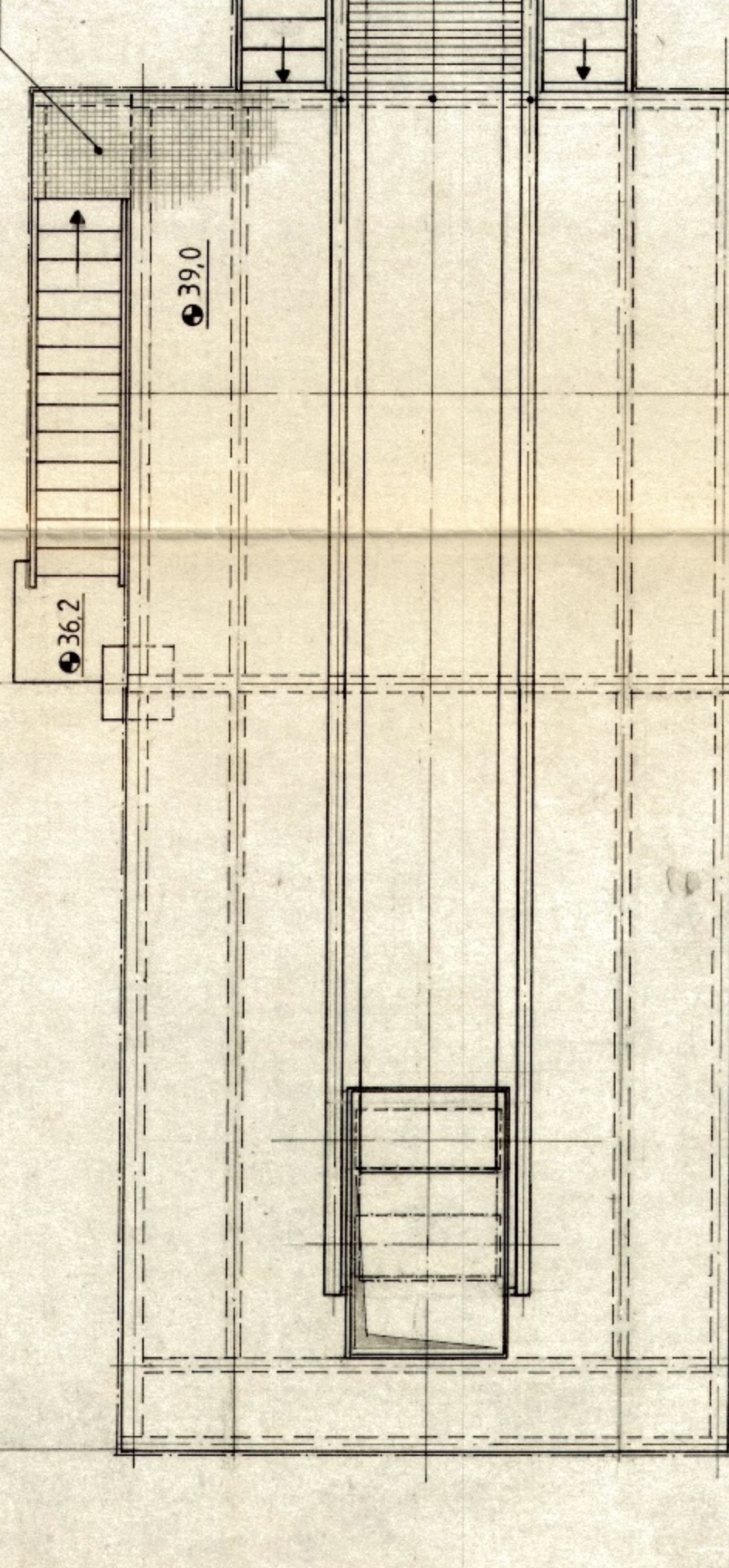
Schnitt: C-D



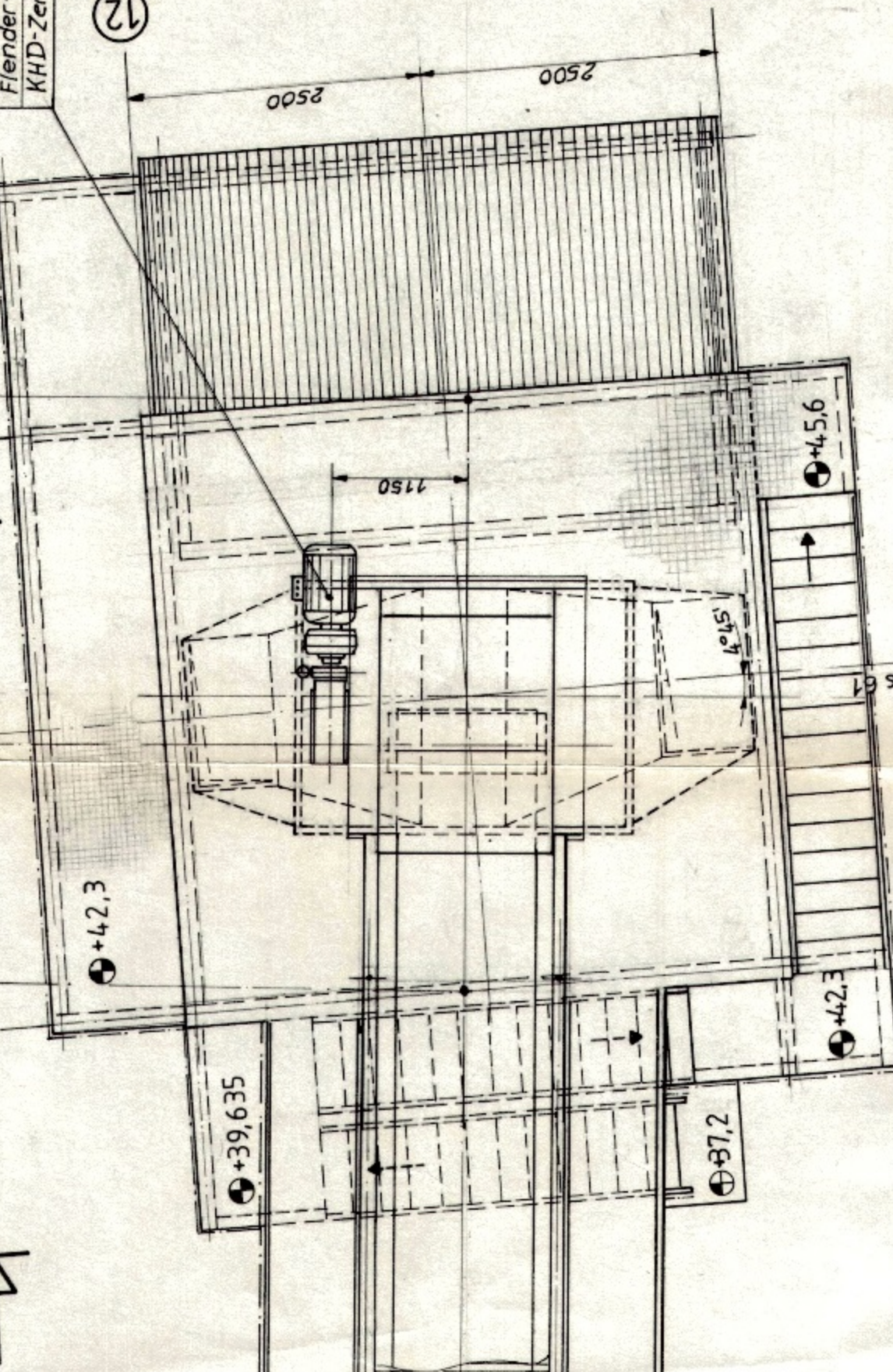
Schnitt: M-N



Bühne: +390



Bühne: +4.56



Fundament

